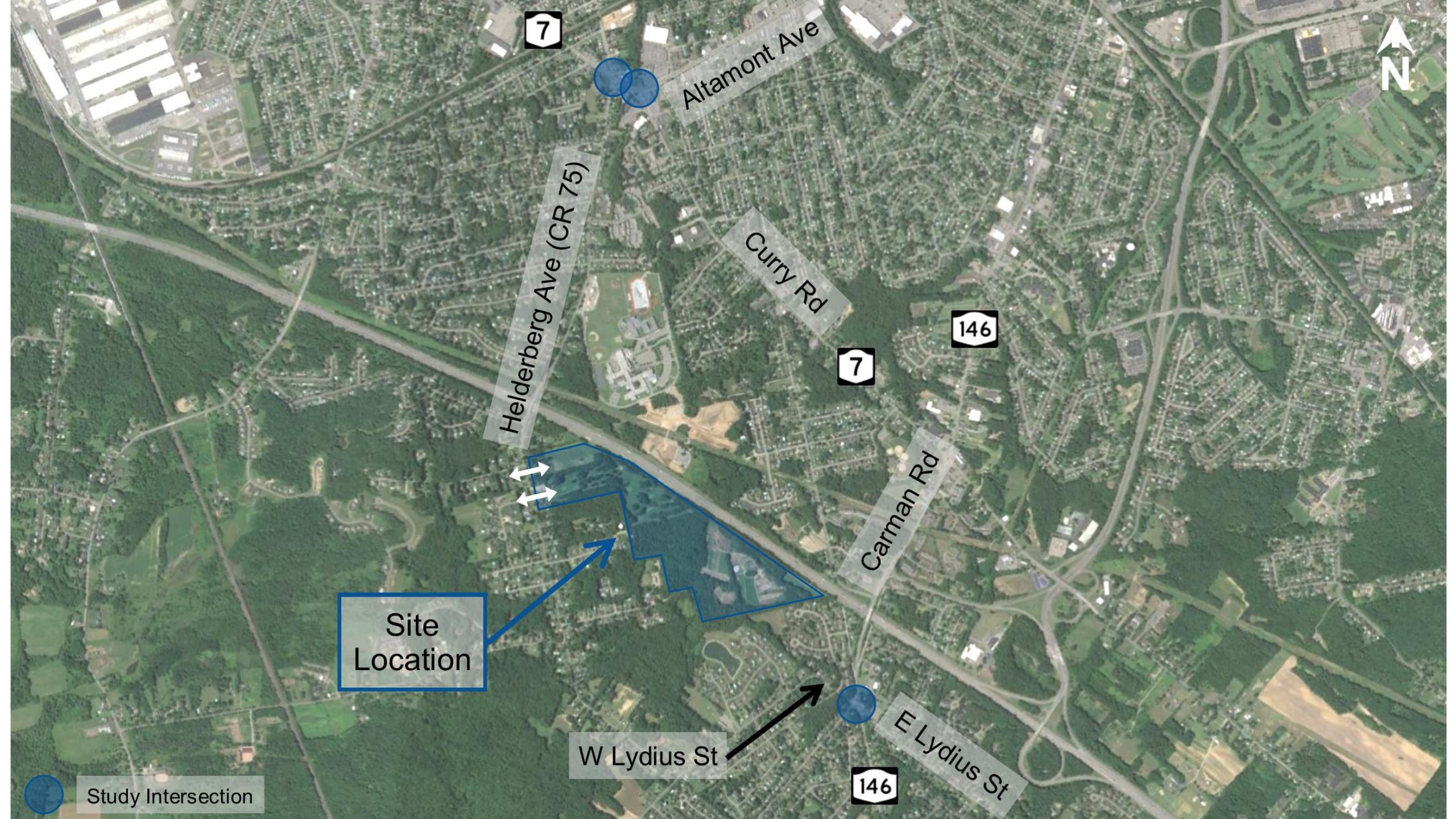


# Whispering Pines Senior Living Community

Transportation



7

Altamont Ave

Helderberg Ave (CR 75)

Curry Rd

7

146

Carman Rd

Site Location

W Lydius St

146

E Lydius St



Study Intersection



# Proposed Project

## Previous Evaluation

- Max 150 single family units
  - 97 Senior detached single family units
  - 30 Senior townhome units
- 278 Senior apartment units
- 144 Assisted living units
- 108 Memory care units
- 9 hole par 3 golf course with club house
- 5,000 SF urgent care building
- 3 access driveways reduced to 2

## Current Proposal

- Max 125 single family units
  - 67 Senior detached single family units
  - 58 Senior townhome units
- 144 Senior apartment units
- 144 Assisted living units
- 108 Memory care units
- 9 hole par 3 golf course with club house
- No urgent care building
- 2 access driveways

# Trip Generation – New Trips

	AM Peak Hour			PM Peak Hour		
	Enter	Exit	Total	Enter	Exit	Total
Previous Evaluation	68	71	139	94	94	188
Current Proposal	50	50	100	69	67	136
<b>Reduction in Trips</b>	<b>18</b>	<b>21</b>	<b>39</b>	<b>25</b>	<b>27</b>	<b>52</b>

\*The land use changes result in a 28% reduction in peak hour trips.

# Trip Assignment

Magnitude less than NYSDOT and ITE Volume Thresholds

## To/from the north

- AM peak hour
  - 28 vehicles entering, 28 vehicles exiting
- PM peak hour
  - 38 vehicles entering, 37 vehicles exiting

## To/from the south

- AM peak hour
  - 22 vehicles entering, 22 vehicles exiting
- PM peak hour
  - 31 vehicles entering, 30 vehicles exiting

# Results and Status

- No Geometric Improvements Recommended- coordination with NYSDOT on signal timings on Curry Road
- Sight Distance at site access- vegetation clearing along site frontage meet industry recommendations at northern access
- Safety evaluation- no discernable accident patterns identified
- Supplemental letter addressing County Line Road completed
- Town TDE has reviewed and commented on Study, responses to comments provided back to Town and agencies
- Study been submitted to NYSDOT and Schenectady County for review
- Trip generation and intersection evaluations for updated plan have been completed and show reduced impacts with revised site plan