

County of Schenectady

Department of Engineering & Public Works

100 Kellar Avenue, Schenectady, NY 12306



Joseph O. Ryan
Director of Public Works
Phone (518) 356-5340, ext.3235
Fax (518) 357-9547

Paul Sheldon, P.E.
Director of Engineering
Phone (518) 356-5340, ext.3234
Fax (518) 356-9077

Bike Path Closure Notice

To: Diane Marco, Town Clerk
Town of Rotterdam
Sunrise Blvd
Rotterdam, NY 12306

Re: Bike Path Closing – The Bike Path will be closed at Lock 8 Park, beginning November 6, 2017 and reopening in January of 2018. Advanced Closure Signs will be placed on the Bike Path from SCCC to Kiwanis Park. The Bike Path shall be closed under Article 5, Section 104 of the New York State Highway Law.

WHEREAS, National Grid has scheduled work at Lock 8 park , This work can only be accomplished by closing the Bike Path.

Detour: See Attached Map from National Grid

By: Joe Ryan
Joe Ryan, Director of Public Works

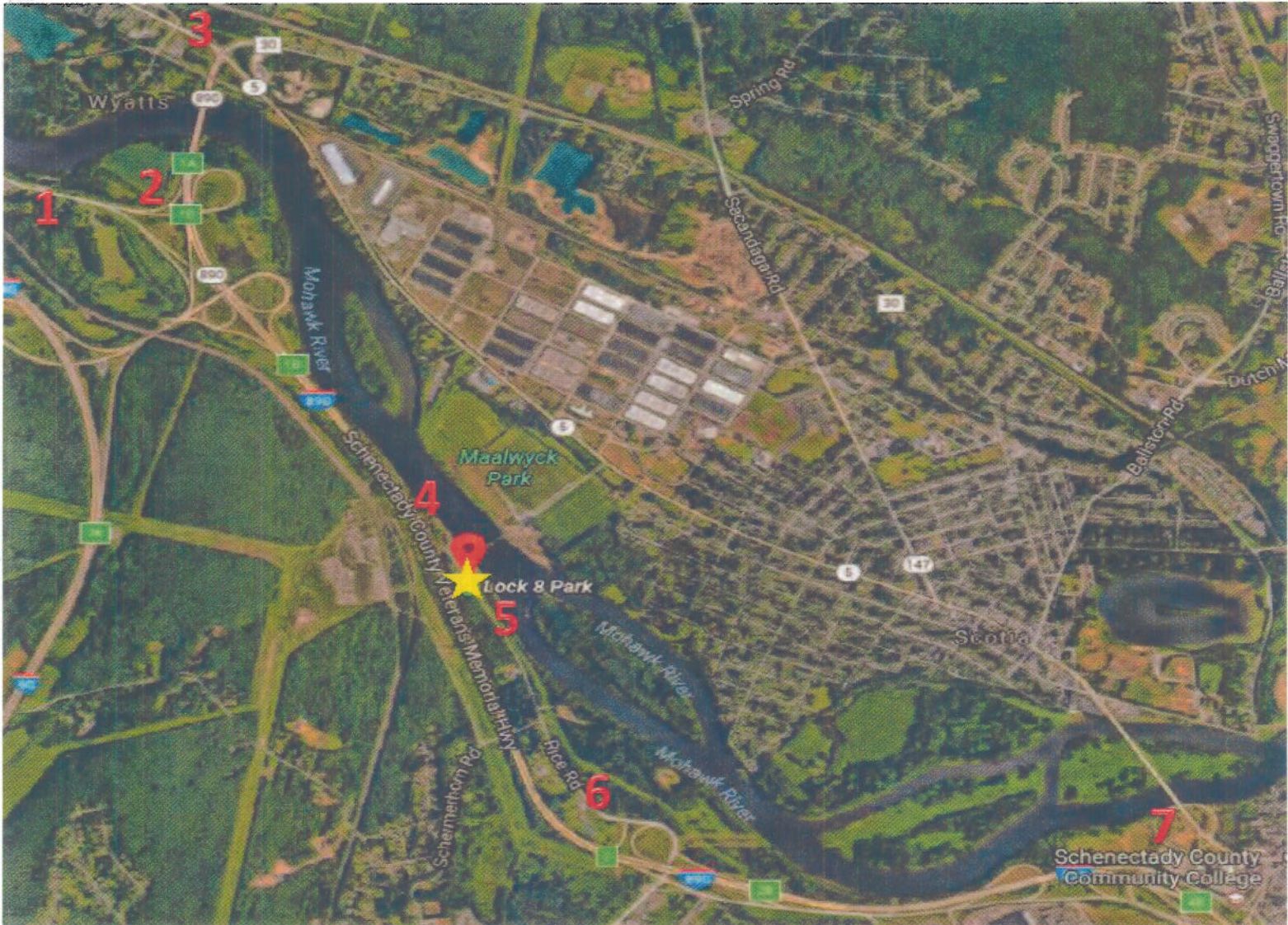
In Lieu Off

Date: 10-23-17

PJS/CO
Rotterdam Fire District #7
REMS
Schenectady Fire Department
Rotterdam Police Dept.
Schenectady County Sheriffs
NYS Police Troop G
Schenectady County EMO
The Daily Gazette
National Grid
Unified Communications Center
NYS Thruway Authority

Lock 8 Relocation Project

Mohawk-Hudson Bikeway Closure Information



The Mohawk-Hudson Bikeway will be closed between Point 4 and Point 5 (see map above) from November 6, 2017, to January 2018.

Lock 8 Relocation Project

Mohawk-Hudson Bikeway Closure Information

Our commitment to our customers and communities begins by providing safe, reliable service, and meeting their increasing demand for energy. National Grid continues to make significant investments in its electric infrastructure in order to maintain reliability and serve customer needs in Upstate New York.

Project Scope

National Grid owns and operates electric facilities in the Capital District, including two 13.2kV circuits currently located on the Lock 8 Bridge in the Town of Rotterdam. The project will remove the electric circuits from the bridge and relocate them under the Mohawk River. To accomplish this, a horizontal directional drill will bore under the river.

Bikeway Closure

To safeguard the public during construction, a portion of the Mohawk-Hudson Bikeway will be closed. Please see the reverse side of this sheet for the project map and closure locations. The Bikeway will be closed between Points 4 and 5 on the map (Lock 8 Park).

For updates and detour information, please visit the Parks & Trails New York Website:
www.ptny.org/bike-canal/map.

Bikeway Closure Timeline:

November 6, 2017: Bikeway Closed
January 2018: Bikeway Reopens



For questions about this project,
please contact:

Nicole Marron
National Grid Stakeholder Relations
518-433-3715

For status updates, visit:
www.ptny.org/bike-canal/map