

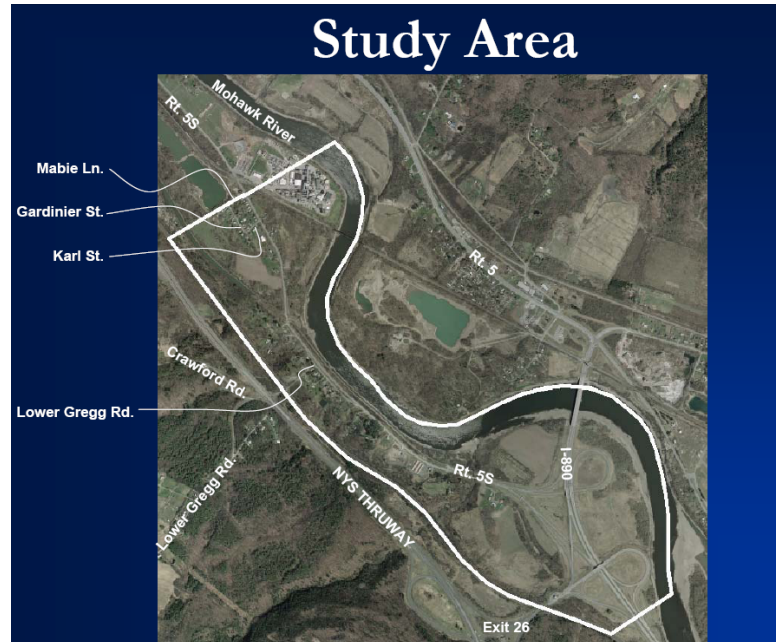
# You are invited to the 2<sup>nd</sup> Public Work Session for the NYS Thruway Exit 26/I-890 Land Use and Transportation Study Town of Rotterdam, NY

---

Monday February 11<sup>th</sup>, 2008  
7:00 PM

Rotterdam Junction Fire Department  
1215 Main Street  
Rotterdam Junction, NY 12150

The Town of Rotterdam, NY, with assistance and funding from the Capital District Transportation Committee, has retained the services of Wilbur Smith Associates to study existing land use and transportation infrastructure to help further refine the Town's future land use vision for the Study Area. The anticipated result of this project will be to develop the tools necessary to help implement the vision and enhance the multi-modal potential of the area.



The scope of this study includes the area bordered by the Mohawk River to the east, the NYS Thruway to the west, Mabie Lane to the north and undeveloped land just south of the I-890/Exit 26 interchange ramps. Located within the study area is a portion of Route 5S, the Village of Lower Rotterdam Junction, the Mohawk-Hudson Bike Trail and the Kiwanis Park and public boat launch.

This area currently consists of a mix of commercial, residential and industrial uses, as well as undeveloped and parcels with the potential for redevelopment. With the extension of public water to the study area in 2004, the Town expects increasing development pressure and envisions this planning study as a catalyst for significant future economic development opportunities.

The Town invites all residents and interested parties to attend this important meeting to provide input on the initial proposed land use changes and transportation improvement options. The consultants will make a presentation on the proposed changes and collect comments from participants. The comments received will be used to make any necessary changes to the information presented and ultimately, to finalize the proposed land use changes and transportation improvement options for inclusion in the Study Area Plan.

**YOUR OPINIONS ARE IMPORTANT TO US.**

**WE WELCOME YOUR INPUT AND HOPE TO SEE YOU AT THE WORK SESSION**

Questions may be directed to: **Peter Comenzo – Senior Planner**  
(518) 355-7660  
[pcomenzo@rotterdamny.org](mailto:pcomenzo@rotterdamny.org)